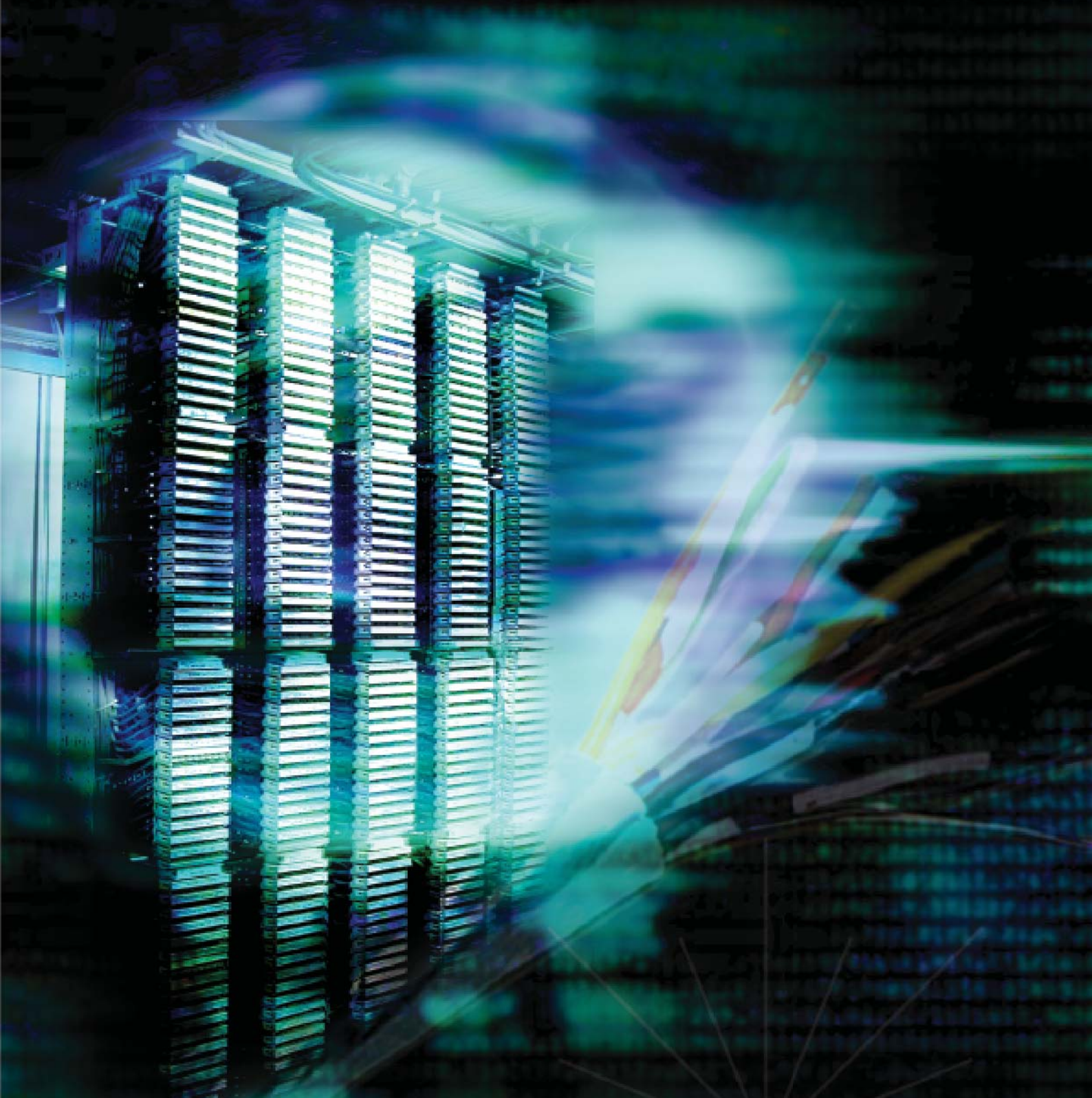


120 Ohm DDF Solution




www.litech.cc

120 Ohms Digital Distribution Frame Solution

120Ohm Digital Distribution Frame is designed for 120Ohms twisted pair cable termination and cross connection in between transmission equipments in fixed or mobile network with proper cable management.

Litech offers full range of 120 Ohms DDF solutions for cross connection requirement in exchanges, MSC, BSC or RBS, such as free standing frames, wall mount frames, rack mount frames as well as enclosed DDF for shared equipment rooms. Litech also offers complete accessories for use with the systems for surge protection, labeling, jumpering as well as other installation accessories.



Easy Installation



120 Ohm termination block features punch down IDC design which made termination work much easier and faster compare to 75Ohm coaxial DDF.

Label for Identification



Frame label holder and flappable module labels are available for proper identification application.

High stability and reliability



DDF modules utilized 45° angle IDC contact with provides more reliable and stress-resistance connection with high stability. The contact elements are silver plated to provide optimum electrical conductivity.

Excellent Cable Management



Litech 120 Ohm DDF Solutions are equipped with proper cable management holder and cable guide, to management both vertical cables as well as cross connect jumpers.



Disconnection Module



10 Pair

8 Pair

Ordering Information

Part Number	Description
LTZF-CL2-8A-PBT	8 Pair Disconnection Module
LTZF-CL2-10A-PBT	10 Pair Disconnection Module

Surge Arrestor



Magazine Arrestor

Single Line Arrestor

Ordering Information

Part Number	Description
LTZF-CL1-10A-PBT	10 Pair Magazine Module
LTZF-CL1-S1-AAR	Single Line Arrestor

Tool & Accessories



Label Holder For Frame

Label Holder For Module

Insulation Plug

Testcord

Insertion Tool

Ordering Information

Part Number	Description
LTZF-LBL-FRM-01-8	Label Holder for 8 Pair Frame
LTZF-LBL-MDL-02-8	Label Holder for 8 Pair Module
LTZF-LBL-FRM-01-10	Label Holder for 10 Pair Frame
LTZF-LBL-MDL-02-10	Label Holder for 10 Pair Module
LTZF-INS-10B-01	10 Pair Insulation Plug
LTZF-INS-1PP-01	1 Pair Insulation Plug
LTZF-10PR-TL-KR	Litech Krone Insertion
LTZF-TES-2P-120	Testcord 2 Pole
LTZF-TES-4P-120	Testcord 4 Pole

Free Standing Frame



120 Module

60 Module

Ordering Information

Part Number	Description
LTZF-FSF-60	Free Standing Frame For 60 Module
LTZF-FSF-1200	Free Standing Frame For 120 Module
LTZF-FSF-2400	Free Standing Frame For 240 Module
LTZF-FSF-60-8P	8 Pair Free Standing Frame For 60 Module
LTZF-FSF-1200-8P	8 Pair Free Standing Frame For 120 Module
LTZF-FSF-2400-8P	8 Pair Free Standing Frame For 240 Module

Wall Mount Box



Ordering Information

Part Number	Description
LTZF-PBX-60	Wall Mount ABS Box For up to 6 Module
LTZF-PBX-100	Wall Mount ABS Box For up to 10 Module
LTZF-PBX-200	Wall Mount ABS Box For up to 20 Module
LTZF-MBX-60	Wall Mount Metal Box For up to 6 Module
LTZF-MBX-100	Wall Mount Metal Box For up to 10 Module
LTZF-MBX-200	Wall Mount Metal Box For up to 20 Module

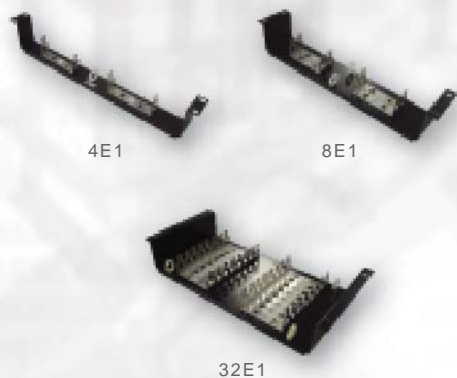
Back Mount Frame



Ordering Information

Part Number	Description
MCZF-INS-10B-01	Frame with cable management guide for 20 module.
MCZF-INS-10B-01	Frame with cable management guide for 30 module.
MCZF-INS-10B-01	Frame with cable management guide for 40 module.
MCZF-INS-10B-01	Double Frame with cable management guide for 40 module.
MCZF-INS-10B-01	Double Frame with cable management guide for 60 module.
MCZF-INS-10B-01	Double Frame with cable management guide for 80 module.

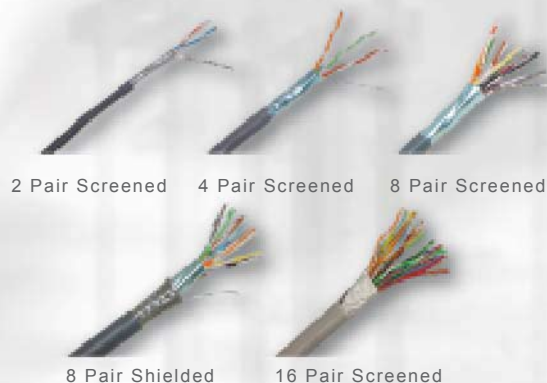
Rack Mount Frame



Ordering Information

Part Number	Description
LTZF-RMF-4E1	19" Rack Mount Frame - 4E1
LTZF-RMF-8E1	19" Rack Mount Frame - 8E1
LTZF-RMF-16E1	19" Rack Mount Frame - 16E1
LTZF-RMF-32E1	19" Rack Mount Frame - 32E1

120 ohm Cables



Ordering Information

Part Number	Description
LTSS-FT-120-02	2 Pair Jumper Cable, Screened, 120 Ohm Balanced
LTSS-FT-120-04	4 Pair Jumper Cable, Screened, 120 Ohm Balanced
LTSS-FT-120-08	8 Pair Jumper Cable, Screened, 120 Ohm Balanced
LTSS-FT-120-16	16 Pair Jumper Cable, Screened, 120 Ohm Balanced
LTSS-FT-120-32	32 Pair Jumper Cable, Screened, 120 Ohm Balanced
LTSS-SFT-120-04	4 Pair Shielded Cable, 120 Ohm Balanced
LTSS-SFT-120-08	8 Pair Shielded Cable, 120 Ohm Balanced
LTSS-SFT-120-16	16 Pair Shielded Cable, 120 Ohm Balanced
LTSS-SFT-120-32	32 Pair Shielded Cable, 120 Ohm Balanced

75 Ohm to 120 Ohm Balun

75 Ohms link is made possible by using 75Ohm to 120 Ohm balun. Balun is a media converter for 2Mbit link which allowed a unbalanced 75Ohm coaxial interface equipment to operate over balanced 120Ohm twisted pair cables, or visa versa. Litech offers 1.6/5.6 balun, BNC or HDC balun to allowed connection to 75 ohm equipment, offering flexibility in different impedance equipment to be used.

IDC Balun



Ordering Information

Part Number	Description
LTBL-IDC-1SM-3P	Coaxial Balun 1.6/5.6 Straight Male to IDC 3 Pole
LTBL-IDC-1SF-3P	Coaxial Balun 1.6/5.6 Straight Female to IDC 3 Pole
LTBL-IDC-3SF-3P	Coaxial Balun BNC Straight Female to IDC 3 Pole
LTBL-IDC-3SM-3P	Coaxial Balun BNC6 Straight Male to IDC 3 Pole

Wire Wrap Balun



Ordering Information

Part Number	Description
LTBL-IDC-4SM-W2P	Coaxial Balun BT43 Straight Male to Wire Wrap
LTBL-IDC-1SF-W2P	Coaxial Balun BT43 Straight Female to Wire Wrap
LTBL-IDC-3SF-W2P	Coaxial Balun BNC Straight Female to Wire Wrap
LTBL-IDC-3SM-W2P	Coaxial Balun BNC Straight Male to Wire Wrap

75/120 Ohm BNC to RJ45 Balun



Coaxial Balun Pigtail



Double BNC Female to RJ45



BNC Male to RJ45

Ordering Information

Part Number	Description
LTBL-PGT2-3SM-45F	Coaxial Balun Pigtail Double BNC Male to RJ45
LTBL-IDC-1SF-3P	Coaxial Balun Box Double BNC Female to RJ45
LTBL-IDC-3SF-3P	Coaxial Balun Box BNC Male to RJ45

Balun Panel



32 Port BNC to RJ45 (FA)



32 Port 1.6/5.6 to RJ45 (FA)



32 Port 1.5/5.6 to RJ45 (FR)



32 Port BNC to RJ45 (FR)

Ordering Information

Part Number	Description
LTBL-PN16-1F-45F (FA)	19" 16 Port BNC Female To RJ45 (Front Access)
LTBL-PN32-1F-45F (FA)	19" 32 Port BNC Female To RJ45 (Front Access)
LTBL-PN16-3F-45F (FA)	19" 16 Port 1.6/5.6 Female To RJ45 (Front Access)
LTBL-PN32-3F-45F (FA)	19" 32 Port 1.6/5.6 Female To RJ45 (Front Access)
LTBL-PN16-3F-45F(FR)	19" 16 Port 1.6/5.6 Female (Back) to RJ45 (Front Access)
LTBL-PN32-3F-45F(FR)	19" 32 Port 1.6/5.6 Female (Back) to RJ45 (Front Access)
LTBL-PN16-1F-45F(FR)	19" 16 Port BNC Female (Back) to RJ45 (Front Access)
LTBL-PN32-1F-45F(FR)	19" 32 Port BNC Female (Back) to RJ45 (Front Access)



www.litech.cc