

# NGFM

## Fiber Optic Management System

**High Density**

**Excellent  
Fiber Management**

**Cost Effective**

**Easy Installation  
& Maintenance**



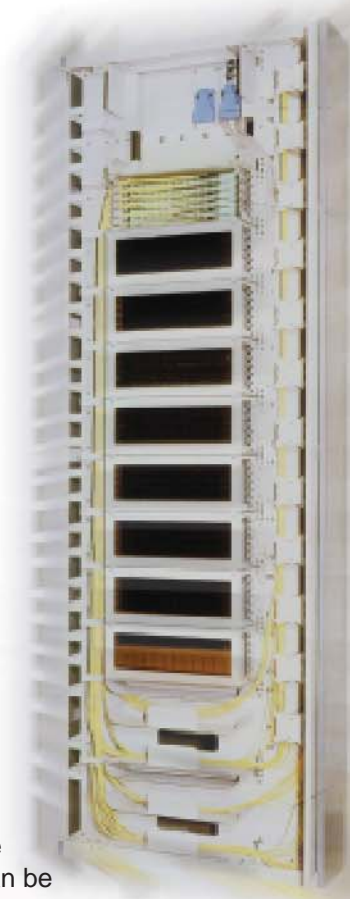
NGFM  
Fiber Optic  
Management System

**Litech**®

[www.litech.cc](http://www.litech.cc)

Litech designed full range of fiber optic panels for different applications utilizing its expert in fiber management systems. This range of product provides points for fiber termination, splicing and fiber storage. Different fiber panels are designed for use in center offices, customer access buildings as well for outdoors applications.

Litech NGFM fiber management systems is designed for high capacity and high density fibers termination and splicing in exchanges, which higher capacity fibers are required but space is constrained. NGFM provides complete solutions for incoming cable management, fiber splicing, connector termination, patchcord storage and routing. A standard 42U height NGFM cabinet with 300mm x 900mm foot print can accommodate more than 600 fiber splicing and termination, which proven to be a perfect fiber management system in modern exchanges.



### High Density

There are more than 600 fibers splicing and termination in standard 42U NGFM cabinet. All NGFM cabinet is front access – all fiber are installed from front, which allowed back to back cabinet installation. More fibers can be installed in the same given space – save space.

### Cost Effective

Fiber pigtail splicing and patching is done in the same tray, which eliminate the need for long pigtails. Shorter fiber patchcords are required as more fibers can be patched in the same cabinet, eliminate the needs of long patchcords.



### Flexibility on Connector Type

NGFM tray can accommodate wide range of standard market fiber adapter types, such as FC, SC, E-2000 or ST without have to change fiber panels. Change of adapter is also can be easily done without use of any tools.

### Save

In NGFM system, all fiber cables and patchcords are properly secured and protected in cabinet, fiber pigtails are also store in NGFM tray and securely covered, no fiber is expose which prevent fibers from accident damage. needs of long patchcords.

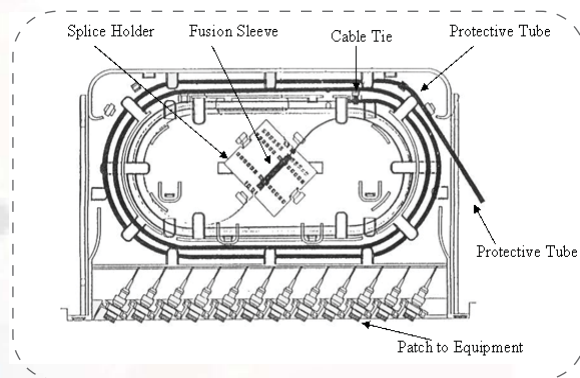
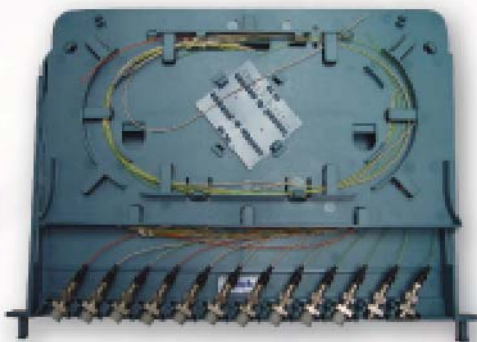
### Easy Installation and maintenance

In NGFM system, all installation and patching are done from front, which make installation and maintenance work easier. Each tray are separately slide in to the panel using a pair of plastic guide, which provide easy access to individual fiber splice, without disturbing other fibers, which made maintenance work easy and safe. tools.



### Excellent Fiber Management

NGFM provide complete solution for incoming cables, fiber splicing and patchcords. Incoming cables are properly strain relieved and fibers are guided to the tray using cable break out kit and flexible but rugged buffer tubes. NGFM trays are designed with proper fiber bending requirement in mind. Cable routing guides are also provided for excess fiber patchcords storage and routing.



### Excellent Appearance

Once installed and closed, no cables or fibers are exposed from NGFM cabinet, which give a excellent appearance compare with conventional fiber panels.



### NGFM 48 Cores, 72 Cores, 96 Cores



#### Ordering Information

Part Number	Description
LTOC-NGFM-3U-48	Fiber Rack Mount NGFM 3U 48C Splice & Patch
LTOC-NGFM-4U-72	Fiber Rack Mount NGFM 4U 72C Splice & Patch
LTOC-NGFM-5U-96	Fiber Rack Mount NGFM 6U 96C Splice & Patch

### NGFM Outdoor Solutions

Litech NGFM system also offers solutions for outdoor applications for fiber access ring network. Different sizes for weather proof cabinet are available using the same fiber management method.



#### Ordering Information

Part Number	Description
LTOC-NGFM-OD-96	NGFM Outdoor Fiber cabinet 96 Core
LTOC-NGFM-OD-288	NGFM Outdoor Fiber cabinet 288 Core



## Fiber Adapter



### Ordering Information

Part Number	Description
LTOC-ADD-FC-SX-C-S	FC Square Flange-Ceremic
LTOC-ADD-SC-SX-C	SC Simplex Adapter-Ceremic
LTOC-CON-SM	E-2000

## Fiber Pigtail



### Ordering Information

Part Number	Description
LTCN-XX00-SM02-1-Xmtr	Singlecore Pigtail
LTCN-XX00-SM02-6-Xmtr	6 Core Pigtail
LTCN-XX00-SM02-12-Xmtr	12 Core Pigtail

## Fiber Patchcord



### Ordering Information

Part Number	Description
LTOC-XXXX-MM03-XXmtr	MM Simplex Patchcord
LTOC-XXXX-SM03-XXmtr	SM Simplex Patchcord
LTOC-XXXX-MM04-XXmtr	MM Duplex Patchcord
LTOC-XXXX-MM04-XXmtr	SM Duplex Patchcord

## Fiber Breakout Kit



### Ordering Information

Part Number	Description
LTOC-BOK-B-BLU	Fiber Breakout Kit (Blue-Big)
LTOC-BOK-M-BEI	Fiber Breakout Kit (BeigeMedium)
LTOC-BOK-OV-B	Fiber Tube Oval (Big)
LTOC-BOK-OV-S	Fiber Tube Oval (Small)



UL  
6798229



SIRIM  
Approved!



GLOBAL  
ISO 9001 : 2000



UKAS  
039

[www.litech.cc](http://www.litech.cc)