



Litech®

www.litech.cc



**STRUCTURED CABLING
SOLUTIONS**

Total Network Connectivity Solution



Networks today have now become indispensable for the efficient operation of most organizations. Establishing and maintaining a reliable, cost effective network infrastructure is widely regarded as essential business competitiveness.

Emerging network technologies running at higher and higher data rates place increasing demands on the cabling system. None-the-less a well designed and implemented system would have a useful life expectancy greater than the network electronics. Thus, the selection of cabling system is viewed as a strategic long term investment and making the right decisions important as replacement can be costly.

Litech® Structured Cabling Solutions provides a multitude of cable and connectivity for both copper and fiber optic, as well as cable management solutions, from office desktop to high capacity data center, from hospital to campus network , and from commercial building to government agencies.



Standards Compliance



Litech® is committed to maintaining a leadership position in the global communications market place. We develop products that meet or exceed ANSI/TIA/EIA Commercial Building Cabling and ISO/IEC Standards where applicable and we will continue to provide innovation solutions that meet your unique needs for both today and tomorrow.

Quality & Reliability



Litech® is committed to deliver products with highest level of quality to our customers. Our ISO accreditation for all manufacturing facilities ensures stringent quality and consistency in our manufacturing process. Litech® products has also gone through some of the most rigorous test in the industry to ensure its long term performance and reliability.



Performance Warranty

The cost of maintaining a high performance cabling system can be expensive, therefore, Litech® delivers range of product and system warranty programmes to ensure your installed network continue to deliver performance over time :

- * **5 Years Extended Components Warranty** - against any defects in material or workmanship when not installed in a certified Litech® Cabling System
- * **20 Years Performance Warranty** - for installation performed by Litech® Certified Installer in a registered and certified Litech® Cabling System using all Litech® premium cables and connectivity hardwares.





Data Cables

Litech® offer wide range of premium data cables for all communication needs. Litech® cables are made to comply with TIA/EIA 568A & ISO/IEC 11801 standards which provide matched performance for Cat5E and Cat6.



Specification	
	UL verified to TIA/EIA 568A & ISO/IEC 11801
	Conductor : Solid or Stranded Copper
	Insulation : Colour-coded PE
	Jacket : PVC or LSOH
	Flammability Grade : CMX, CM, MP, CMR, MPR
	Rated Temperature : 60°C
	Reel/pull out box packing available

- | | | | |
|--|--|--|---|
| <input checked="" type="checkbox"/> Cat 3 | <input checked="" type="checkbox"/> UTP | <input checked="" type="checkbox"/> Outdoor UTP | <input checked="" type="checkbox"/> 4 Pair |
| <input checked="" type="checkbox"/> Cat 5 | <input checked="" type="checkbox"/> FTP | <input checked="" type="checkbox"/> Outdoor FTP | <input checked="" type="checkbox"/> 25 Pair |
| <input checked="" type="checkbox"/> Cat 5E | <input checked="" type="checkbox"/> SFTP | <input checked="" type="checkbox"/> Outdoor SFTP | |
| <input checked="" type="checkbox"/> Cat 6 | | | |

RJ45 Patchcords

Litech® RJ45 Patchcords provide optimum performance in interfacing equipment, maintaining the data rates and signal integrity of today's high speed networks. All patchcords are made with quality RJ45 Plug, fully moulded boots for excellent strain relief. Litech® Modular Plug are designed to accommodate solid or stranded cables. These high performance plugs are coated with gold plating and exceed TIA/EIA performance requirements.

Part Number	Description
LTSS-PC5E-UXX-YY	UTP Cat 5E - Patchcord
LTSS-PC5E-FXX-YY	FTP Cat 5E- Patchcord
LTSS-PCC6-UXX-YY	UTP Cat 6 - Patchcord
LTSS-PCC6-FXX-YY	FTP Cat 6 - Patchcord
XX - Colour Boots	White (W1), Grey (G2), Red (R3), Yellow (Y4), Green (E5), Blue (B6), Black (K7)
YY - Cable Length	0.5m, 1.0m, 1.5m, 2.0m, 3.0m, 5.0m

Part Number	Description
LTSS-CUC3-25	UTP Category 3 - 25 pair
LTSS-CUC5-25	UTP Category 5 - 25 pair
LTSS-CU5E-25	UTP Category 5E - 25 pair
LTSS-CU5E-04	UTP Category 5E - 4 pair
LTSS-FT5E-04	FTP Category 5E - 4 Pair
LTSS-ST5E-04	SFTP Category 5E - 4 Pair
LTSS-CUC6-04	UTP Category 6 - 4 pair
LTSS-FTC6-04	FTP Category 6 - 4 Pair
LTSS-STC6-04	SFTP Category 6 - 4 Pair
LTSS-OU5E-04	Outdoor UTP Category 5E - 4 Pair
LTSS-OF5E-04	Outdoor FTP Category 5E - 4 pair
LTSS-OS5E-04	Outdoor SFTP Category 5E - 4 Pair





RJ45 Patch Panels

Litech® offers complete range of patch panels to suit unshielded and shielded cable applications.



- 24 Port
- Cat 5E
- Unshielded
- 48 Port
- Cat 6
- Shielded

Specification	
<input checked="" type="checkbox"/>	Dielectric Strength : 1kV RMS at 60Hz for 1 minute
<input checked="" type="checkbox"/>	Current Rating : 1.5Amp maximum
<input checked="" type="checkbox"/>	Insulation Resistance : 200MΩ minimum
<input checked="" type="checkbox"/>	Contact Resistance : 1mΩ per contact
<input checked="" type="checkbox"/>	Durability : 200 cycles
<input checked="" type="checkbox"/>	Temperature Range : -40°C to +70°C
<input checked="" type="checkbox"/>	Transmission Performance : exceeds ISO/IEC11801 Class E & AS/NZs 3080:2003 Class E

Horizontal Cable Management Guide

Part Number	Description
LTSS-PP5E-U24-B	Cat 5E 24 Port UTP Patch Panel - Unshielded
LTSS-PP5E-U48-B	Cat 5E 48 Port UTP Patch Panel - Unshielded
LTSS-PP5E-S24	Cat 5E 24 Port UTP Patch Panel - Shielded
LTSS-PPC6-U24-B	Cat 6 24 Port UTP Patch Panel - Unshielded
LTSS-PPC6-U48-B	Cat 6 48 Port UTP Patch Panel - Unshielded
LTSS-PPC6-S24	Cat 6 24 Port UTP Patch Panel - Shielded

Part Number	Description
LTSS-MG-01P	Cable Management Guide 1U (Plastic Type)
LTSS-MG-01M	Cable Management Guide 1U (Metal Type)
LTSS-MG-02M	Cable Management Guide 2U (Metal Type)





Face Plate And Floor Outlet

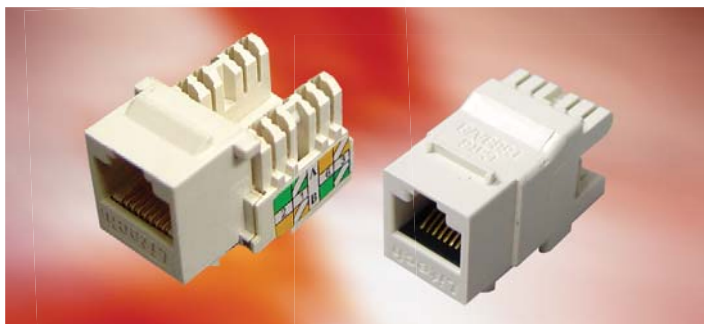
Litech® provides varies types of workstation outlets to suit different countries' standard. All faceplates are in slim and ergo-compact design with smooth and elegant finished surface.



Part Number	Description
LTSS-FPBS-01	BS Style Face Plate Single Port
LTSS-FPBS-02	BS Style Face Plate Dual Port
LTSS-FPAS-01	US Style Face Plate Single Port
LTSS-FPAS-02	US Style Face Plate Dual Port
LTSS-FPAS-03	US Style Face Plate Three Port
LTSS-FPAS-04	US Style Face Plate Four Port
LTSS-FPFO-N1	Floor Outlet Single Port
LTSS-FPFO-N2	Floor Outlet Dual Port

- BS Style
 US Style
 Floor Outlet

RJ 45 Modular Jack



Part Number	Description
LTSS-MJ5E-U01	Cat 5E Modular Jack - Unshielded
LTSS-MJ5E-U02	Cat 5E Modular Jack 180° - Unshielded
LTSS-MJ5E-S01	Cat 5E Modular Jack - Shielded
LTSS-MJC6-U01	Cat 6 Modular Jack - Unshielded
LTSS-MJC6-U02	Cat 6 Modular Jack 180° - Unshielded
LTSS-MJC6-S02	Cat 6 Modular Jack - Shielded

- Unshielded
 Shielded



Connection & Disconnection Module

Litech® offers a complete range of reliable, quick and easy to use MC Modular Connection System for telephony applications. The MC Modular Connection System comes in connection, disconnection, protection facilities and other accessories such as frames, patch panels and labelling systems to provide total solutions for cable management.



Part Number	Description
LTZF-CL2-10A-PBT	10 Pair Disconnection Module
LTZF-CL2-10B-PBT	10 Pair Connection Module

Wall Mount DP & Frame



Part Number	Description
LTZF-PBXA-30	Wall Mount DP Box 30 Pair (Plastic)
LTZF-PBXA-50	Wall Mount DP Box 50 Pair (Plastic)
LTZF-PBXA-100	Wall Mount DP Box 100 Pair (Plastic)
LTZF-MBXA-30	Wall Mount DP Box 30 Pair (Metal)
LTZF-MBXA-50	Wall Mount DP Box 50 Pair (Metal)
LTZF-MBXA-100	Wall Mount DP Box 100 Pair (Metal)
LTZF-MFP-100	Wall Mount Frame 100 Pair with Plastic Guide
LTZF-MFM-200	Wall Mount Frame 200 Pair with Metal Guide
LTZF-MFM-400D	Wall Mount Frame 400 Pair Double Metal Guide

*Other sizes are available



Magazine Arrestor



Part Number	Description
LTZF-CL1-SA-ARR	1 Pair Singleline Arrestor
LTZF-CL1-SF-ARR	1 Pair Singleline Arrestor With Failed-Safe
LTZF-CL1-10A-PBT	10 Pair Magazine Arrestor
LTZF-CL1-10F-PBT	10 Pair Magazine Arrestor With Failed-Safe

Rack Mount Frame



Part Number	Description
LTZF-RMF-150-SS	Rack Mount Frame 150 Pair Stainless Steel

*Other sizes are available

RJ11 Patch Panel & Jack

Litech® RJ11 jack features a toolless termination method whereby termination of the cable only with the use of thumb, without any termination tool required. Same RJ11 jack is used for faceplate, floor outlet as well as RJ11 patch panel.

Part Number	Description
LTZF-PPTL-RJ11-24	RJ 11 Patch Panel 24 Port
LTZF-MJTL-RJ11-6P4C	RJ 11 Toolless Jack 6P4C

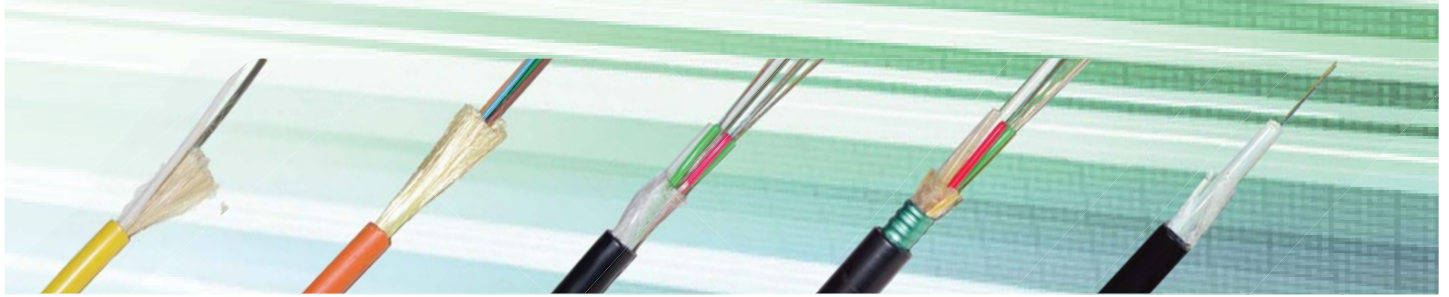




FIBER OPTIC

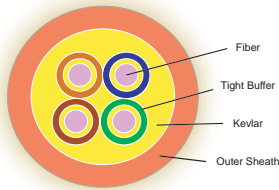
Fiber Optic Cables

Litech® offers full range of fiber optic cables for different applications and environments: singlemode and multimode, indoor and outdoor.



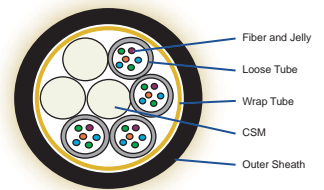
Indoor Distribution Cable

Part Number	Fiber Count
LTOC-CB-XX05-04	4
LTOC-CB-XX05-06	6
LTOC-CB-XX05-08	8
LTOC-CB-XX05-10	10
LTOC-CB-XX05-12	12



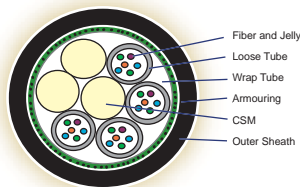
Outdoor All Dielectric Duct Cable

Part Number	Fiber Count
LTOC-CB-XX07-04	4
LTOC-CB-XX07-06	6
LTOC-CB-XX07-08	8
LTOC-CB-XX07-10	10
LTOC-CB-XX07-12	12



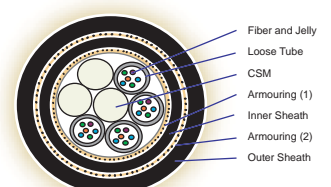
Outdoor Armoured Duct Cable

Part Number	Fiber Count
LTOC-CB-XX08-04	4
LTOC-CB-XX08-06	6
LTOC-CB-XX08-08	8
LTOC-CB-XX08-10	10
LTOC-CB-XX08-12	12



Outdoor Direct Buried Cable

Part Number	Fiber Count
LTOC-CB-XX09-04	4
LTOC-CB-XX09-06	6
LTOC-CB-XX09-08	8
LTOC-CB-XX09-10	10
LTOC-CB-XX09-12	12



* XX - Type of Fiber - SM : Singlemode
MM : Multimode 62.5µm
MF : Multimode 50µm

* Other fiber count or custom design are available

Fiber Optic Patchcords

Litech® patchcords are made with quality manufacturing technologies with low attenuation and low back reflection. All of Litech® patchcords gone through testing in strict accordance with the international standards.

Part Number		Connector Type	
LTOC -	-	D4 : D4	LA : LC/APC
1st Connector	2nd Connector	DI : DIN	ST : ST
Type of Cable	Custom Length	FC : FC	MR : MTRJ
01 : 250um 04 : Duplex	Type of Fiber	FA : FC/APC	SM : SMA
02 : 900um 05 : Distribution	SM : Singlemode	SC : SC	E2 : E2000
03 : Simplex 06 : Breakout	MM : Multimode 62.5µm	SA : SC/APC	EA : E2000/APC
	MF : Multimode 50µm	FD : FDDI	MU : MU
		LC : LC	





Fiber Optic Connectors and Adapters



Part Number

Connector
 SM : Singlemode
 MM : Multimode

01 : 0.9mm
 02 : 2.0mm
 03 : 3.0mm

LTOC - CON - [] - [] - []

Connectors Interface Type

Adapter

LTOC - ADP - [] [] - [] - [] []

SX : Simplex
 DX : Duplex

C : Ceramic
 B : Bronze

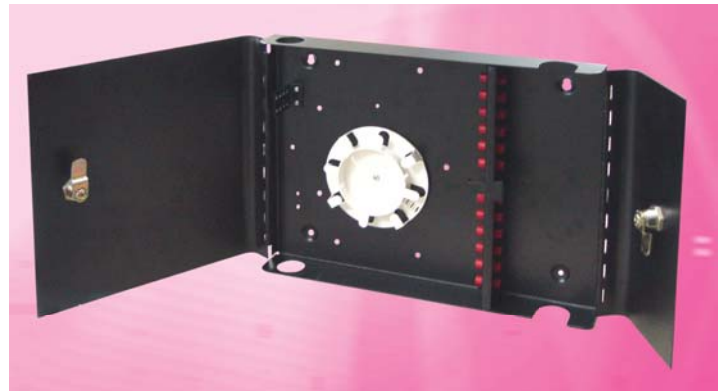
D : D Flange
 S : Square Flange
 C : SC Foot Print

Connectors Interface Type

D4 : D4
 DI : DIN
 FC : FC
 FA : FC/APC
 SC : SC
 SA : SC/APC
 FD : FDDI
 LC : LC
 LA : LC/APC
 ST : ST
 MR : MTRJ
 SM : SMA
 E2 : E2000
 EA : E2000/APC
 MU : MU

Fiber Management System

Litech® design and manufacture full range of fiber management system, for small fiber count fiber panels in customer premises to large capacity fiber management racks in data centers .



Fiber Optic Converters

Litech® offers wide range of fiber media converters for conversion between fiber to twisted pair and vice versa.

Part Number	Description
LTCV-10/100M-SC02	10/100 Base-TX to Fiber Converter, SC, MM-2km
LTCV-10/100S-SC25	10/100 Base-TX to Fiber Converter, SC, SM-25km
LTCV-10/100S-SC40	10/100 Base-TX to Fiber Converter, SC, SM-40km
LTCV-10/100/1000M-SC.22	10/100/1000 Base-TX to Fiber Converter, SC, MM-220m
LTCV-10/100/1000S-SC20	10/100/1000 Base-TX to Fiber Converter, SC, SM-20km
LTCV-SMMM-SC20	100 Base-FX SC MM(2km) to SM(20km) Converter, SC
LTCV-FOM-4E1	Fiber Optic Multiplexer, 4E1

Part Number	Description
LTOC-WFPT-12-B	WFPT Wall Mount Fiber Dist Box 12 Core
LTOC-WFPT-24-B	WFPT Wall Mount Fiber Dist Box 24 Core
LTOC-RFPE-12-B	RFPE Rack Mount Fiber Dist Panel 12 Core (Fixed)
LTOC-RFPE-24-B	RFPE Rack Mount Fiber Dist Panel 24 Core (Fixed)
LTOC-RFPT-12-B	RFPT Rack Mount Fiber Dist Panel 12 Core (Pull Out)
LTOC-RFPT-24-B	RFPT Rack Mount Fiber Dist Panel 24 Core (Pull Out)

* Other fiber count management panels are available.



RACKING SYSTEM



Equipment Rack

Litech® manufactured wide range of racks, cabinets, and enclosures to suit all telecommunication and data network equipment and cabling's requirement. With inhouse CAD/CAM design and CNC manufacturing facilities, Litech® has the ability to customized cabinets, racks, and panels with superior design and quality to address different and specified requirement for network installations. Litech® free standing equipment rack are design with high quality finishing and appearance to suit modern office environment as well as data centers.

Specification

- ▶ Standard 19" mounting holes
- ▶ Adjustable mounting channels for different equipment depth mounting
- ▶ Lift off side panel with slam latches for easy removal and close of side panel
- ▶ 180° swing door for wider opening and easy access
- ▶ Vented roof for heat dissipatiant
- ▶ High quality epoxy powder coated
- ▶ Various height, depth and width for different applications

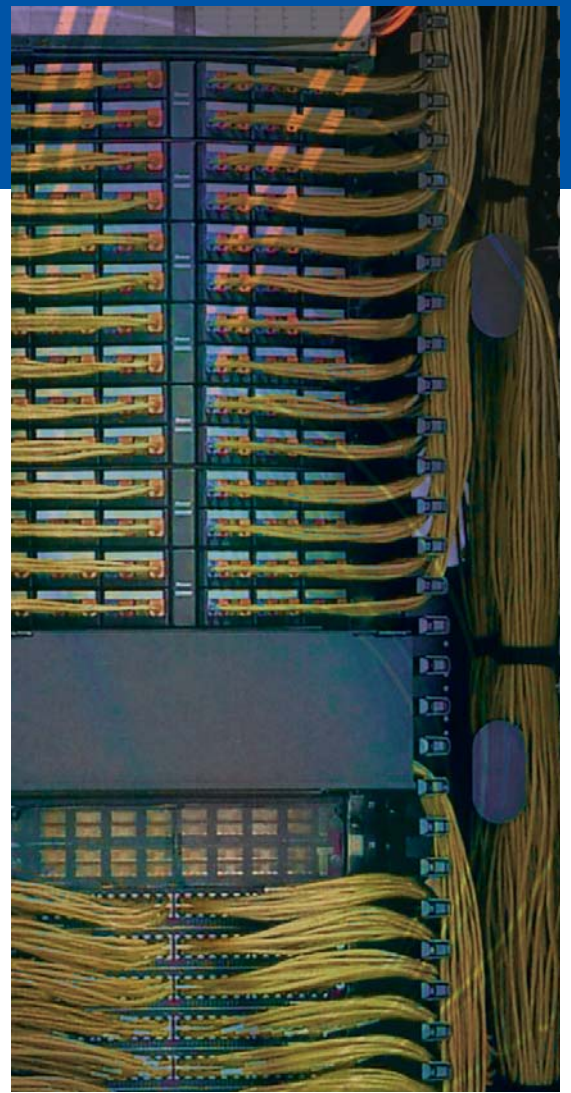


Accessories

 Blank Panel LTR-ACC-BP	 Fixed Shelf LTR-ACC-ESF	 Cable Management Guide LTSS-MG-01P
 Sliding Shelf LTR-ACC-ESP	 Cantilever Shelf LTR-ACC-CS	 230V AC/48V DC Fan Tray LTR-ACC-FTRY
 Keyboard Tray LTR-ACC-KBT	 Power Points Strip LTR-ACC-PP	 Ventilation Fan LTR-CSM-FAN-AC/DC
 Caged Nut LTR-CSM-CNUT-M6	 Adjustable Feet LTR-CSM-ADJ	 Castor Wheel LTR-CSM-CAST

Part Number	Description						
LTR1-XY-6060-42B	Free Standing Equipment Rack, 42U, 600x600mm						
LTR1-XY-6070-42B	Free Standing Equipment Rack, 42U, 600x700mm						
LTR1-XY-6080-42B	Free Standing Equipment Rack, 42U, 600x800mm						
LTR1-XY-6090-42B	Free Standing Equipment Rack, 42U, 600x900mm						
LTW1-XY-6045-09B	Wall Mount Equipment Rack, 9U, 600x450mm						
LTW1-XY-6045-12B	Wall Mount Equipment Rack, 12U, 600x450mm						
LTW1-XY-6045-15B	Wall Mount Equipment Rack, 15U, 600x450mm						
X - Door Type	<table border="0"> <tr> <td>M - Metal</td> <td>P - Perspex</td> </tr> <tr> <td>MP - Metal Perforated</td> <td>T - Tempered Glass</td> </tr> <tr> <td>MC - Metal Curve Perforated</td> <td>O - No Door</td> </tr> </table>	M - Metal	P - Perspex	MP - Metal Perforated	T - Tempered Glass	MC - Metal Curve Perforated	O - No Door
M - Metal	P - Perspex						
MP - Metal Perforated	T - Tempered Glass						
MC - Metal Curve Perforated	O - No Door						
Y - Mounting Standard	<table border="0"> <tr> <td>01 - 19"</td> <td>02 - 21"</td> <td>03 - 23"</td> </tr> </table>	01 - 19"	02 - 21"	03 - 23"			
01 - 19"	02 - 21"	03 - 23"					
* Other customized dimensions are available.							





Cable Management Rack

Litech® sturdy and versatile cable management rack is design for used where high capacity of cable terminations and jumpering are required in modern day data centers and equipment rooms. The cabinet is fitted with front patchcord routing channels for proper patch cables rounding. The channels is design with swing covers to protect and organize the patch cables, giving neat and presentable appearance.

Part Number	Description		
CMR-XY-8080-42B	Close Cable Management Rack 42U, 800x800mm		
OMR-01-2040-42B	Open Cable Management Rack 42U, 800x400mm		
OMR-ACC-CG20-B	Side Cable Management Guide For OMR Rack - 200mm width		
X - Door Type	M - Metal	P - Perspex	
	MP - Metal Perforated	T - Tempered Glass	
	MC - Metal Curve Perforated	O - No Door	
Y - Mounting Standard	01 - 19"	02 - 21"	03 - 23"
* Other customized dimensions are available.			



TOTAL NETWORK CONNECTIVITY SOLUTIONS



TOTAL TELECOMMUNICATION & NETWORKING SOLUTIONS