



RACK & CABINET




Litech®
www.litech.cc

Litech® was established to provide innovative, quality and cost effective solutions for growing telecommunications and networking industry. The company placed great emphasis in understanding and satisfying the customer's needs.

All Litech products are manufactured with superior quality and according to international standard.

Litech manufactured wide range of racks, cabinets, and enclosures to suit all telecommunications, networking equipment and cabling's requirement. With inhouse CAD/CAM design and CNC manufacturing facilities, Litech has the ability to customized cabinets, racks and panels with superior design and quality to address different and specified requirement for network installations.

Litech is ISO 9001:2000 certified company, which shows our commitment on quality. Various third party certifications has also been obtained on outdoor cabinet testing such as IP, environment and temperature testing which prove that the cabinet are able to pass stringest environmental tests and suitable for housing outdoor communication equipment applications.



RACK & CABINET

EQUIPMENT RACK



Litech® manufactured wide range of racks, cabinets, and enclosures to suit all telecommunication and data network equipment and cabling's requirement. With inhouse CAD/CAM design and CNC manufacturing facilities, Litech® has the ability to customized cabinets, racks, and panels with superior design and quality to address different and specified requirement for network installations. Litech® free standing equipment rack are design with high quality finishing and appearance to suit modern office environment as well as data centers.



Cable Management Guide
LTSS-MG-01P



Blank Panel
LTR-ACC-BP



Fixed Shelf
LTR-ACC-ESF



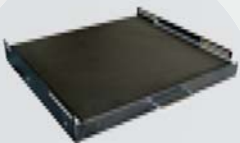
Sliding Shelf
LTR-ACC-ESP



Cantilever Shelf
LTR-ACC-CS



Ventilation Fan
LTR-CSM-FAN-AC/DC



Keyboard Tray
LTR-ACC-KBT



Power Points Strip
LTR-ACC-PP



230V AC/48V DC Fan Tray
LTR-ACC-FTRY



Caged Nut
LTR-CSM-CNUT-M6



Adjustable Feet
LTR-CSM-ADJ



Castor Wheel
LTR-CSM-CAST

Advantages

- Standard 19" mounting holes
- Adjustable mounting channels for different equipment depth mounting
- Lift off side panel with slam latches for easy removal and close of side panel
- 180° swing door for wider opening and easy access
- Vented roof for heat dissipatent
- High quality epoxy powder coated
- Various height, depth and width for different applications



CABLE MANAGEMENT RACK



Litech® sturdy and versatile cable management rack is design for used where high capacity of cable terminations and jumpering are required in modern day data centers and equipment rooms. The cabinet is fitted with front patchcord routing channels for proper patch cables rounting. The channels is design with swing covers to protect and organize the patch cables, giving neat and presentable appearance.



Part Number	Description		
CMR-XY-8080-42B	Close Cable Management Rack 42U, 800x800mm		
OMR-01-2040-42B	Open Cable Management Rack 42U, 800x400mm		
OMR-ACC-CG20-B	Side Cable Management Guide For OMR Rack - 200mm width		
X - Door Type	M - Metal	P - Perspex	
	MP - Metal Perforated	T - Tempered Glass	
	MC - Metal Curve Perforated	O - No Door	
Y - Mounting Standard	01 - 19"	02 - 21"	03 - 23"

* Other customized dimensions are available.

RACK & CABINET

ETSI RACK

Litech® sub rack is complying with ETSI Standard and various design are available for different equipment mounting requirements.



ESR



ESR1



ESR2

OPEN SYSTEM RACK



LTR-OA



LTR-OP



LTR-OT

Litech® Open System Rack is well designed self-supporting channel racks with 19", 21" or 23" mounting and various height. All racks are fabricated with high quality epoxy powder finishing.

DIGITAL DISTRIBUTION FRAME

Litech® design and manufactured wide range of free standing Digital Distribution Frame for high density digital cross connecting in telecom exchanges.

Advantages

- High density
- Designed to accommodate various type of connectors
- Cable holder and cable guide for proper cable management



DLC OUTDOOR CABINET

Litech® DLC Outdoor Cabinet is a weather proof cabinet designed to house electronic equipment for outdoor applications such as xDSL, DSLAM, MSAN, DLC or other control and monitoring equipment. The cabinet is designed for extreme climate conditions against water, dust and extreme temperatures.



Advantages	
●	Adjustable mounting pillar for 19" or 21" mounting
●	Removable top for easy exhaust fans maintenance
●	3 points locking system to protect against vandalism or malicious attack
●	Tested for IP55 against water and dust
●	IP Filter and stainless steel netting to protect against dusts and insects.
●	Modular design, different compartment for equipment, battery and MDF
●	Various design for heat management : fans with temperature sensor or relay, heat sink, heat exchanger, cooling air-cond



Specification	
Material	Electro-galvanized steel sheet / Aluminium
Finishing	High quality oven baked epoxy powder coated
Protection Category	IP 55
Application Temperature	-40°C to +50°C
Dimensions (Standard design) *Other customized dimension are available	Height - 1850 mm Width - 1600 mm Depth - 800 mm

Part Number					
DLC - [] - [] - [] - [] - []					
Material	Model	Width	Depth	Height	Color
EG: Electro Galvanized Steel				27: 27U 33: 33U 37: 37U	
AL: Aluminium					

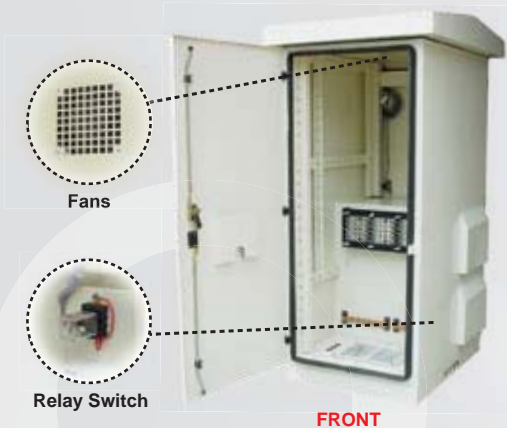
RACK & CABINET

TSM OUTDOOR CABINET

Litech® TSM Outdoor Cabinet are designed to accommodate telecommunications equipment. The cabinets are front and rear accessible with double 19" mounting pillars at both front and back for extra equipment mounting capacity.

Advantages

- Standard 19" mounting pillars for equipment mounting
- High quality oven baked powder coated for outdoor applications
- Front and back mounting for extra capacity
- Diagonally positioned louvers for ventilation
- AC or DC fans available with timer for more heat extraction
- Double layers battery compartment
- 19" mount grounding bar is provided for effective common grounding point



Specification	
Material	Electro-galvanized steel sheet / Aluminium
Finishing	High quality oven baked epoxy powder coated
Protection Category	IP 55
Application Temperature	-40°C to +50°C
Dimensions (Standard design)	Height - 1500 mm
*Other customized dimension are available	Width - 610 mm
	Depth - 810 mm



Part Number						
TSM - <input type="text"/> <input type="text"/> - <input type="text"/> <input type="text"/> - <input type="text"/> <input type="text"/>						
Material	Model	Width	Depth	Height	Color	
EG: Electro Galvanized Steel				27: 27U	33: 33U	
AL: Aluminium				37: 37U		

